

### GENERAL

2tec2 floor covering must be installed by a professional installer in conditions similar to those when the room is in use.

Failure to follow these instructions will void the warranty. All commitments made by Le Tissage d'Arcade S.A. are subject to our General Terms and Conditions.

### STORAGE AND INSPECTION

The planks must be stored in their original packaging and on the original pallet or on a flat sub-floor, in a room at a temperature of between 15°C (65°F) and 30°C (86°F). Do not place any heavy objects on top of the planks. Adhere to the original stacking height. Do not stack any pallets on top of each other. Planks must always be stacked neatly.

Products with visible defects cannot be claimed once installed or cut. Defects must be reported beforehand in accordance with our General Terms and Conditions.

### SUB-FLOOR PREPARATION AND LEVELLING

The sub-floor must be solid, free from cracks, permanently dry and free of impurities such as dirt, dust, oil and grease. Older floor coverings and adhesive residues must be carefully removed, and any damaged parts or cavities in the sub-floor must be repaired.

The sub-floor must be treated with a primer and leveled with a self leveling compound. Use compatible products from one manufacturer and follow their instructions carefully. These will vary depending on the type of sub-floor (concrete, anhydrite, wood, etc.)

The levelled surface must be dry, sanded and free of dust before the adhesive and floor covering can be applied.

### INSTALLATION

#### 1. Acclimatisation

The planks must be placed in the room 48 hours before installation. The floor temperature must be at least 15°C (60°F) and the room temperature must be between 18°C (65°F) and 25°C (77°F). Relative humidity must be between 55% and 75%.

#### 2. Applying the adhesive

The types of adhesives to be used depend on the type of backing. The warranty will be void if unapproved adhesives are used.

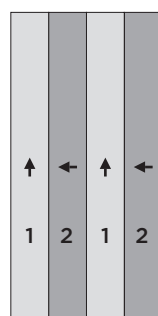
**Comfort Backing:** UZIN U2100, Thomsit K145, Mapei Ultrabond Eco Fix, Mapei Ultrabond Eco 810, Mapei Ultrabond Eco 811, F Ball Styccobond F41, Collak WA-25

**PVC Backing:** UZIN U1000, Thomsit T425, Mapei Ultrabond Eco Tack LVT, F Ball Styccobond F41

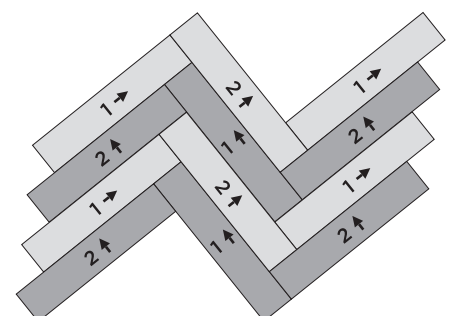
#### 3. Installation

Each batch has a specific batch number and consists out of 1 or more pallets each having their proper pallet no. Work through the pallets in descending order of the parent roll number, e.g. from 1318166 to 1318161. The pallets must be consumed from top to bottom. In case you have multiple batch numbers, use one batch number per room.

The planks are packed on pallets like on the drawing:



Fitting patterns:



Use a pressure roller over the seams.

During installation fibreglass may become visible. These fibres are brittle and can be easily removed by rubbing them with a damp cloth, ideally before laying the tiles in the adhesive. The fibres can also be removed after installation and drying of the glue by using a damp cloth or brush.

#### 4. Protecting the new floor

The floor should be protected with a foil or cardboard, immediately after installation to prevent damage resulting from work carried out after installation.

No work may be carried out by other companies between installation and delivery of the floor. It is recommended to organize a partial delivery/acceptance, per floor level or zone, in consultation with the client and/or the architect.