

INSTALLATION MANUAL



CONCRETE LCDA

Innovative solutions in concrete for interior design

UPON RECEIPT OF YOUR ORDER

➔ CHECK THE GOODS



➔ WRITE ANY COMMENTS ON THE WAYBILL BEFORE RETURNING SIGNED COPY TO THE DRIVER

➔ TAKE PICTURES OF THE CONDITION OF THE GOODS IF NECESSARY.



TO SUCCEED YOUR INSTALLATION

WEAR **GLOVES** TO AVOID STAINING THE PANELS



ALWAYS HANDLE THE PANELS BY **THEIR EDGES**

USE A SUITABLE ADHESIVE SUCH AS **HYBRIFIX 550 - DEN BRAVEN SEALANTS** (recommended)



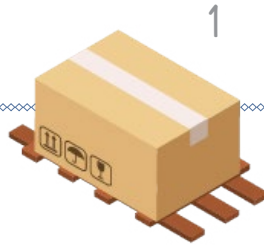
DRILL AND CUT ONLY WITH **DIAMOND TOOLS**

REMOVE DUST FROM THE PANELS BEFORE AND AFTER INSTALLATION



DO NOT USE ADHESIVE STRIPS ON THE PANEL CLADDING

PACKAGING



- ➔ Panels are delivered on **pallets or crates**.
- ➔ The panels are stored on their edges and **wrapped in sets of two panels**.
- ➔ **Quality control is done at the factory** and the crate/pallet remains closed/sealed until the delivery

PACKAGING DIMENSIONS (W*L*H)

PANBETON®

PALLET
2750*600*1250 mm



CRATE
2750*775*1250 mm



SLIMBETON®

PALLET
1350*600*1250 mm

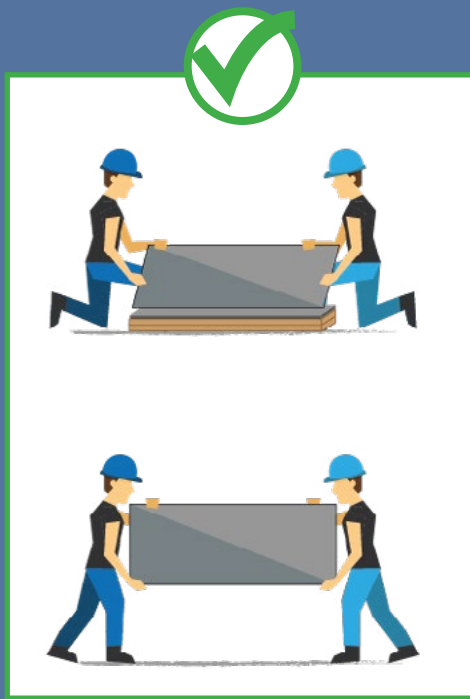
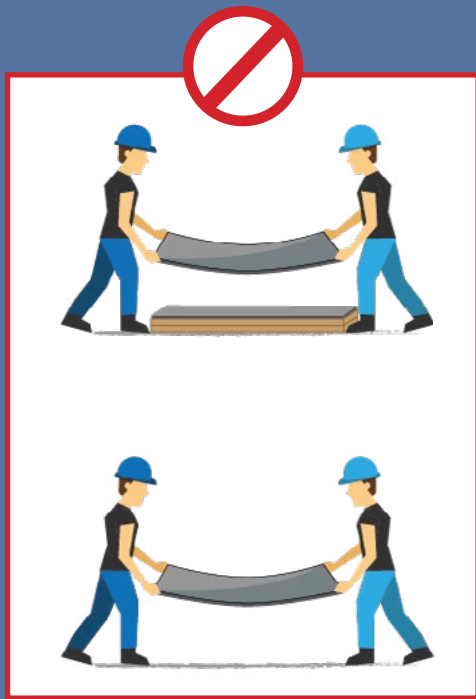


CRATE
1350*600*1250 mm



HANDLING THE PANELS

- The panels must be handled **vertically by their edges**
- Be careful **not to bend the panels**
- Warning: the **angles and edges of the panels are fragile.**

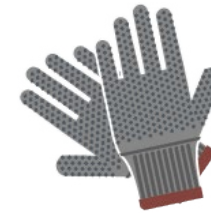


SLIMBETON® : one person can transport a panel.
However, for safety reasons, it is recommended that two people carry it.

PANBETON®

- Panels shorter than 2700 mm must be carried **by 2 people**.
- Panels longer than 2700 mm must have a **third person** to support the centre of the panel.

NECESSARY MATERIAL



PROTECTIVE GLOVES

SAFETY HEADPHONES



PROTECTIVE GOGGLES

DUST MASK

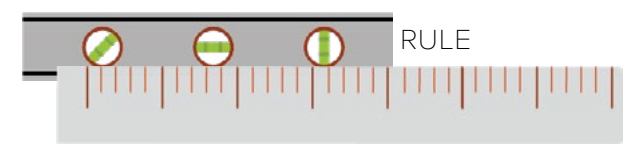


HAND BRUSH



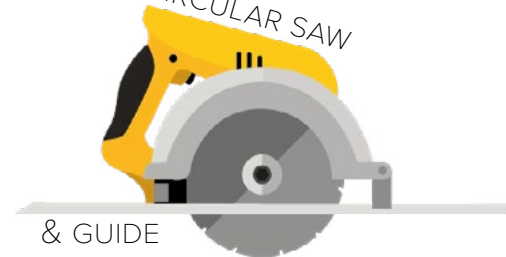
MALLET

LEVEL

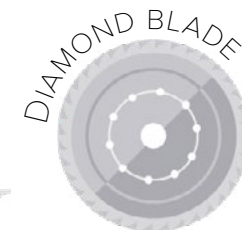


RULE

CIRCULAR SAW



& GUIDE RAIL



DIAMOND BLADE

REDUCER RING*



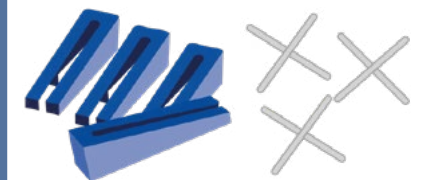
*Available in the cutting kit as an option

GLUE GUN



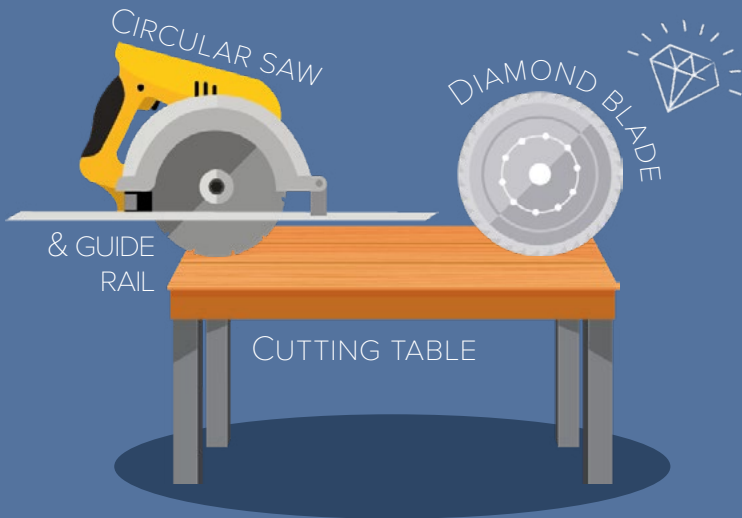
ADHESIVE CARTRIDGE
HYBRIFIX 550 DEN
BRAVEN SEALANTS
(recommended)

FOR **SLIMBETON®**



SPACERS FOR LEVELLING SYSTEM
& CROSSPIECES FOR SETTING
WITH JOINTS

CUTTING

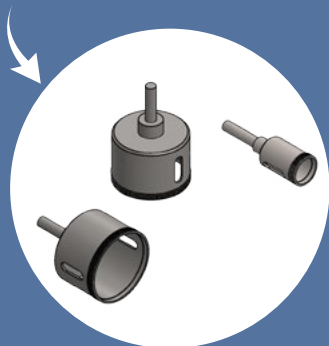


For a clean, smooth cut, we recommend::

- ➔ A cutting table: the panel must be placed on it with **concrete side facing up**.
- ➔ A plunge-cut saw with a **continuous-rim diamond blade**, (Do not use a wood blade)
- ➔ A **dry cut**.
- ➔ A **guide rail**.
- ➔ **Drilling** (ex. electrical outlet): use a **diamond-coated hole saw**.



Not recommended



COLLAGE



ADHESIVE CARTRIDGE
HYBRIFIX 550 DEN
BRAVEN SEALANTS
(RECOMMENDED)

- ➔ The adhesive can be applied directly **on the panel or on the wall**.
- ➔ The walls that hold the panels must be **clean, dry, dust-free and solid**.

For panel installation on a surface other than Placoplatre®, please consult with us.

- ➔ **Recommended adhesive**: Hybrifix 550 Den Braven Sealants, single-component polyurethane type.

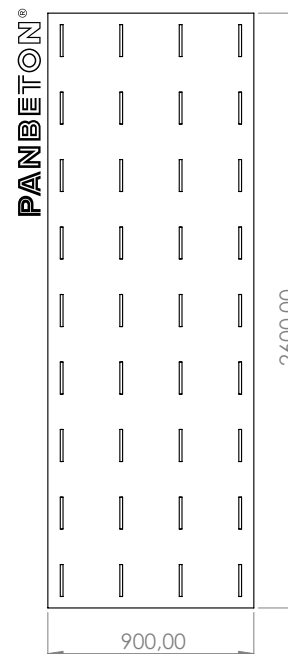
For more information, refer to the adhesive's technical and safety sheets, which are available upon request through the manufacturer or company Concrete LCDA.

- ➔ **Amount of adhesive per panel**: :

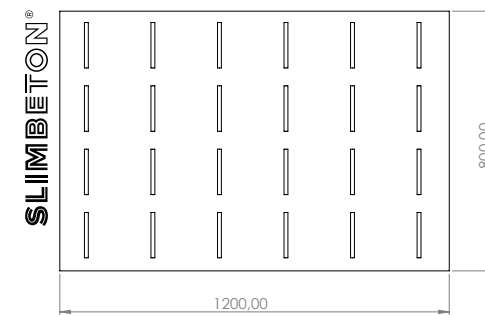
PANBETON® ≈ 2 adhesive cartridges per standard-size panel (2600*900 mm).

SLIMBETON® ≈ 1 adhesive cartridge per standard-size panel (1200*800 mm).

DIAGRAMS ARE ILLUSTRATIVE FOR ADHESIVE APPLICATION:



Apply the adhesive in vertical lines spaced apart by 10 cm.



CORRECTLY POSITIONING THE PANEL

➤ After applying the adhesive on the back of the panel or directly on the wall, **quickly place the panel on the wall starting with the bottom edge**. Some panels can have a slight curve to them (showing an arrow), which will be corrected through installation: the panels are flexible, so **starting at the bottom and using a ruler will ensure that they are flat**.

➤ **It is possible to adjust the panel's position for a few minutes after it is installed**: attach the panel while keep a minimum distance of 1 to 2 mm between the wall and the panel. **Adjust the panel by pressing first on its edges then evenly** and successively on the entire surface of the panel to compress the adhesive.

The lines of adhesive compensate for the differences in thickness of the panels through their general tolerance of +/- 3 mm. So it is important to keep some leeway during the installation of the first panels to guarantee their alignment.

- Use a level **to manage the panels' alignment**.
- Following the initial adherence, **it is not required to continuously hold onto the object being glued**.

⚠ General tolerance of the panels: +/- 3 mm.

JOINTS

- **PANBETON®** : Butt-joint installation is recommended.
- **SLIMBETON®** : A recessed joint of 2 mm between each panel with the use of cross pieces is recommended .
- It is possible to reduce the visible dividing lines between the panels: using Mapei® silicon joints is recommended.



DRYING TIME= 24 HRS

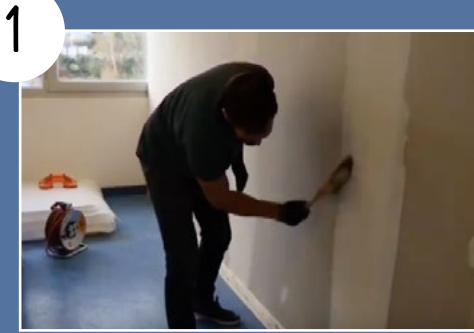
(For Slimbeton®, do not remove the cross pieces before 24 hrs)



- REMINDER -

- The panels must **be handled vertically by their edges**
- Be careful **not to bend the panels**
- Warning: the **angles and edges of the panels are fragile**.

INSTALLATION



CLEAN THE AREA BEFORE THE INSTALLATION



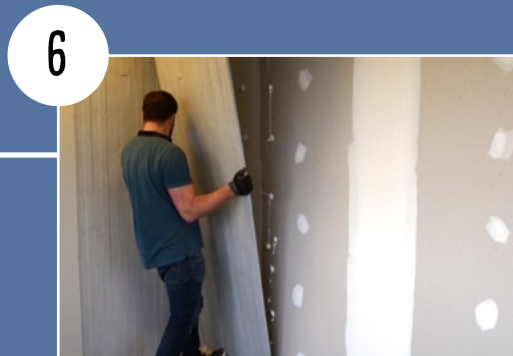
TAKE MEASUREMENTS BEFORE CUTTING THE PANEL



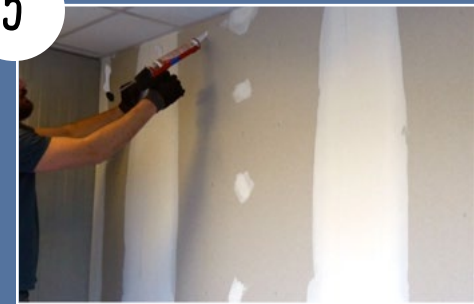
COPY YOUR MEASUREMENTS ON THE PANEL



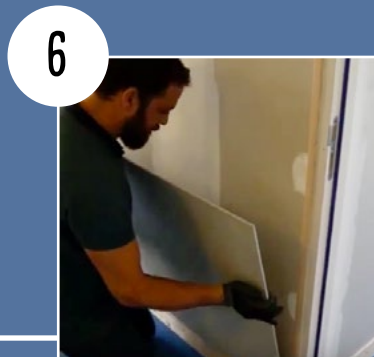
CUTTING WITH THE USE OF A GUIDE RAIL



PLACE THE PANEL STARTING WITH THE BOTTOM



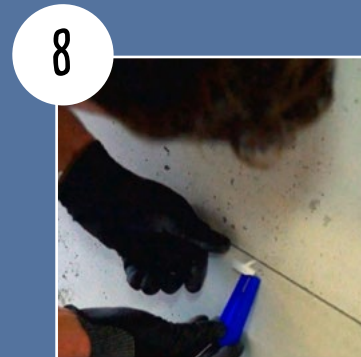
APPLY GLUE ON THE WALL (OR ON THE PANEL)



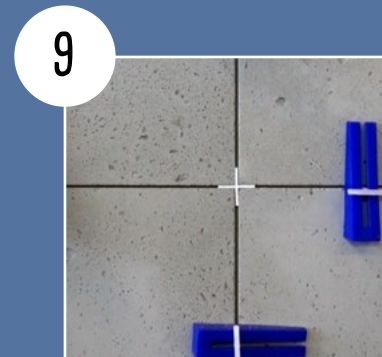
PLACE THE PANEL STARTING WITH THE BOTTOM



POSITION THE WEDGES AT REGULAR SPACES



THEN THE BLUE WEDGES



AND THE CROSS PIECES

PANBETON®

INSTALLATION VIDEO STEP BY STEP TO WATCH ON OUR YOUTUBE CHANEL @CONCRETE LCDA

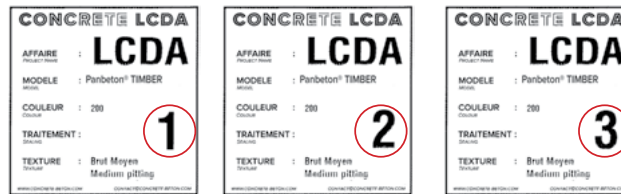


SLIMBETON®

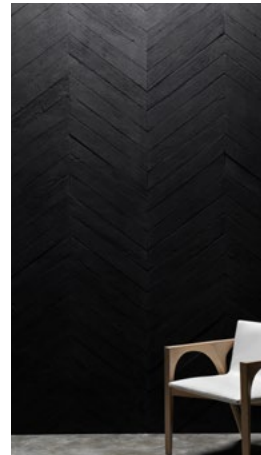
INSTALLATION SPECIFICS, ONLY FOR PANBETON® TIMBER // PANBETON® CHEVRONS MODELS

Panbeton® Timber and Panbeton® Chevrons are available in three different plank designs. Each design has its own wood grain pattern.

These three designs are marked with numbers 1, 2 and 3 indicated on the labels of each panel :



Panbeton® Timber

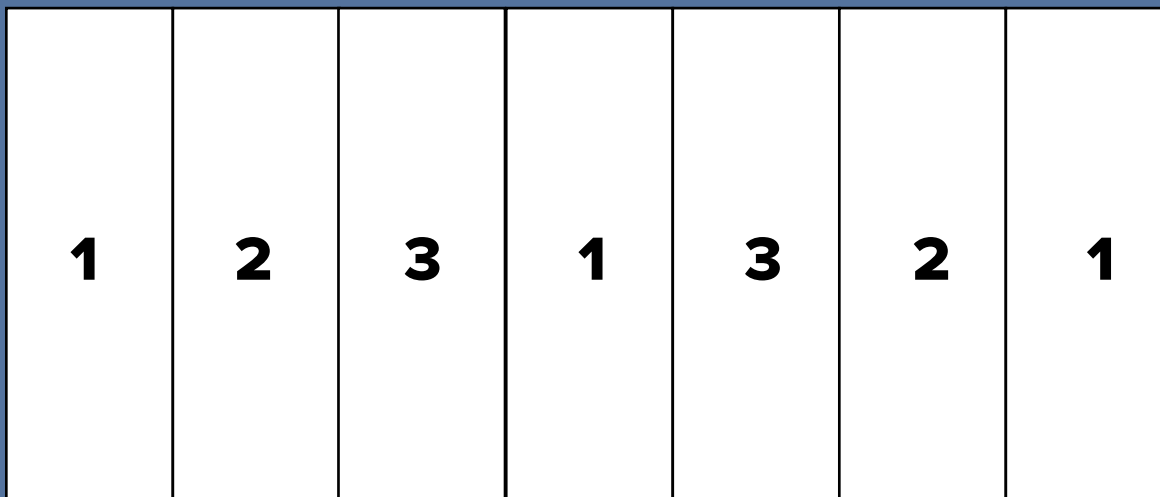


Panbeton® Chevrons

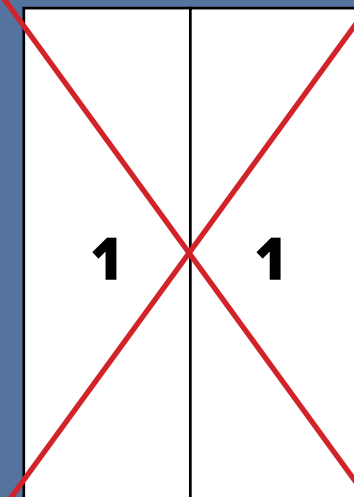
When installing the panels, consider alternating the different designs, making sure not to put two of the same designs together. You can arrange the designs as follows: 1-2 or 2-1 , 1-3 or 3-1, 2-3 or 3-2, in order to achieve the best visual effect.



Example of layout:



DO NOT put two of the same designs together:

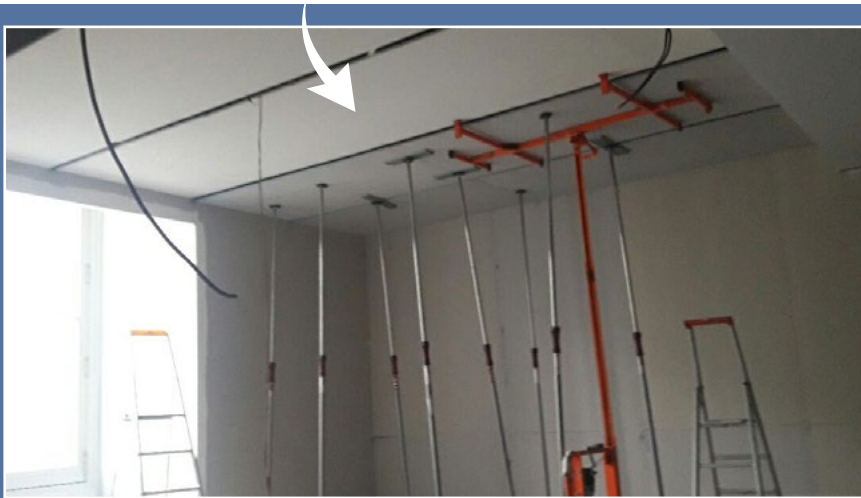


CEILING INSTALLATION

It is possible to install Panbeton® Slimbeton® panels on the ceiling.

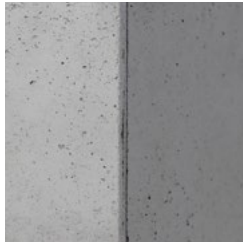
INSTRUCTIONS

- Ensure that the ceiling material can hold the panels
- Gluing: same guidelines as vertical installation
- **Each panel must be held for a minimum of 24 hours using props. Use spacers to protect the panels** (see the photo below).

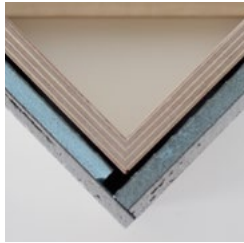


PANBETON®

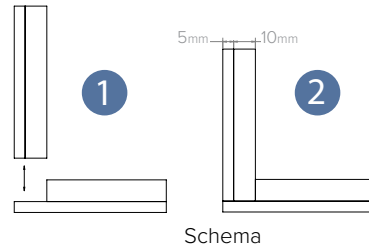
1 - Edge cut



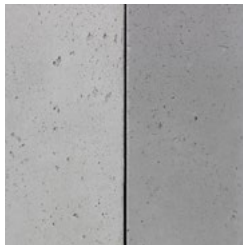
Front view



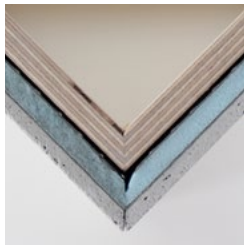
Top view



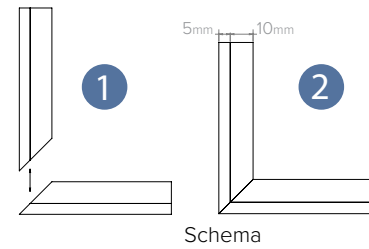
2 - 45 degree cut *



Front view



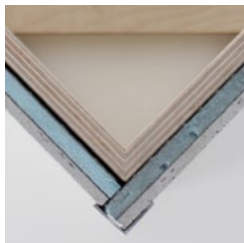
Top view



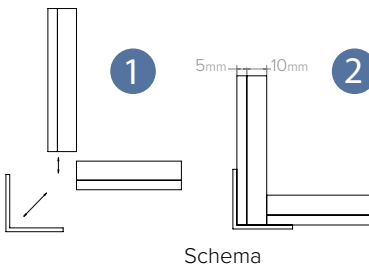
3 - Aluminium angle



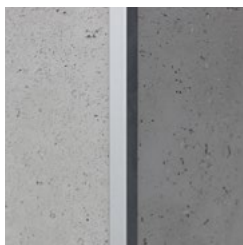
Front view



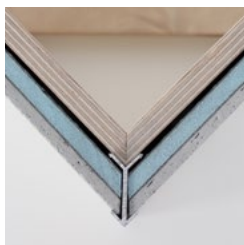
Top view



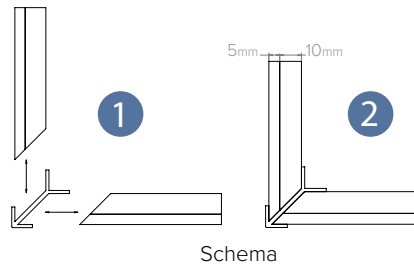
4 - Aluminium corner connector*



Front view



Top view

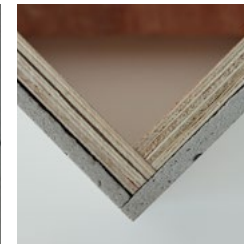


SLIMBETON®

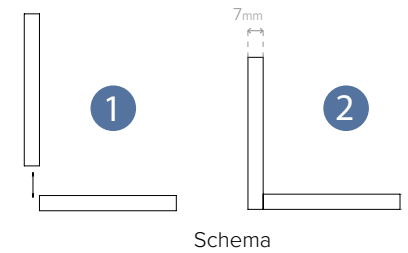
1 - Edge cut



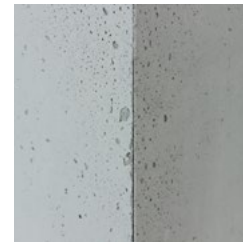
Front view



Top view



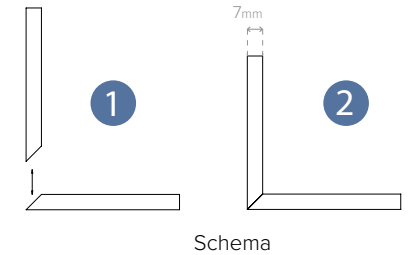
2 - 45 degree cut*



Front view



Top view



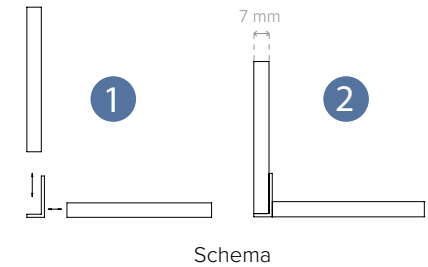
3 - Adding an angle iron



Front view



Top view



* 45 degree cuts can be done at the Concrete LCDA Workshop (option upon request).

CARACTERISTICS	ALUMINIUM ANGLE	ALUMINIUM CORNER CONNECTOR
Application	<input checked="" type="checkbox"/> PANBETON® <input checked="" type="checkbox"/> SLIMBETON®	<input checked="" type="checkbox"/> PANBETON® Up to 16mm thickness
Lenght	2600 mm	
Anodising	E6 / EV1	
Material and appearance	Aluminium, anodised, mat silver colour	
Illustration & diagram		

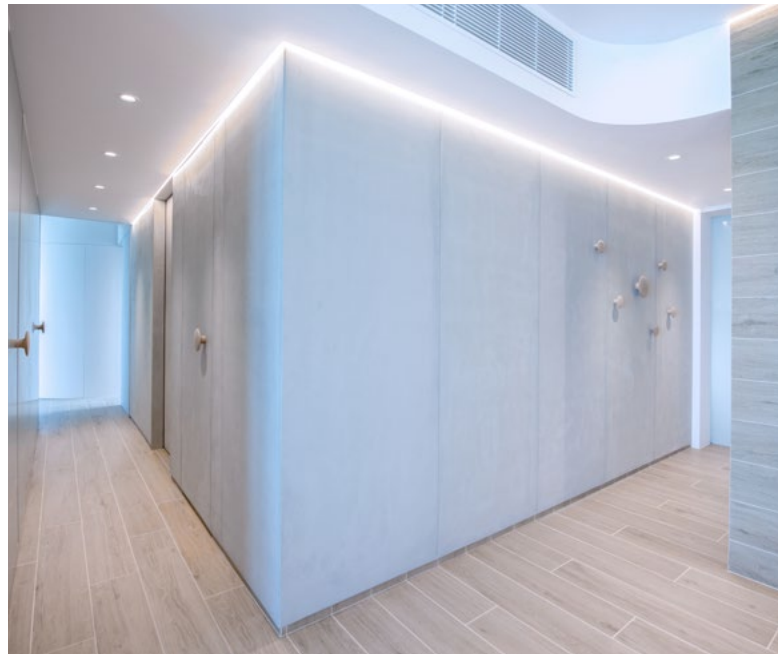
TO CLEAN YOU PANBETON® AND SLIMBETON® PANELS,
ALL YOU NEED IS **A DAMP CLOTH.**



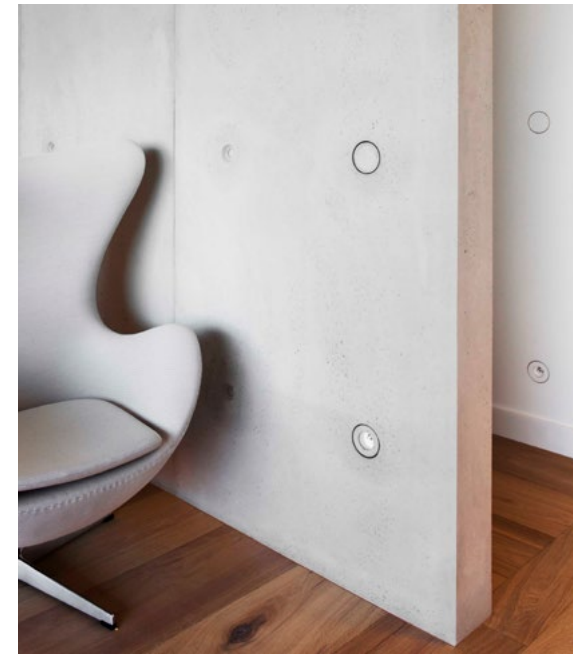
ABRASIVE LIQUID OR
POWDER CLEANERS
SHOULD NOT BE USED.



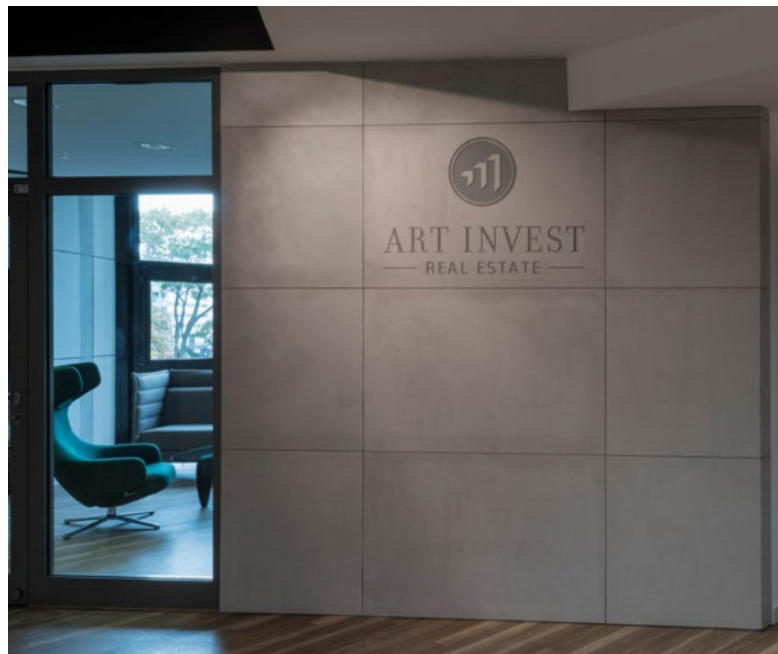
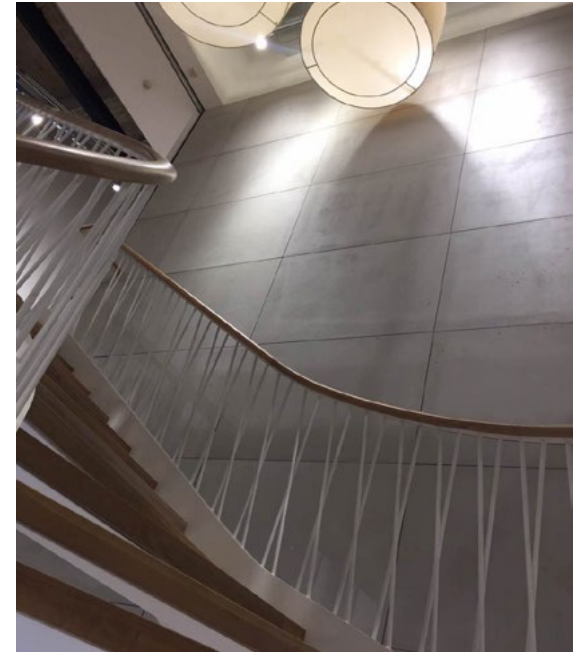
INSTALLATION EXAMPLES PANBETON®



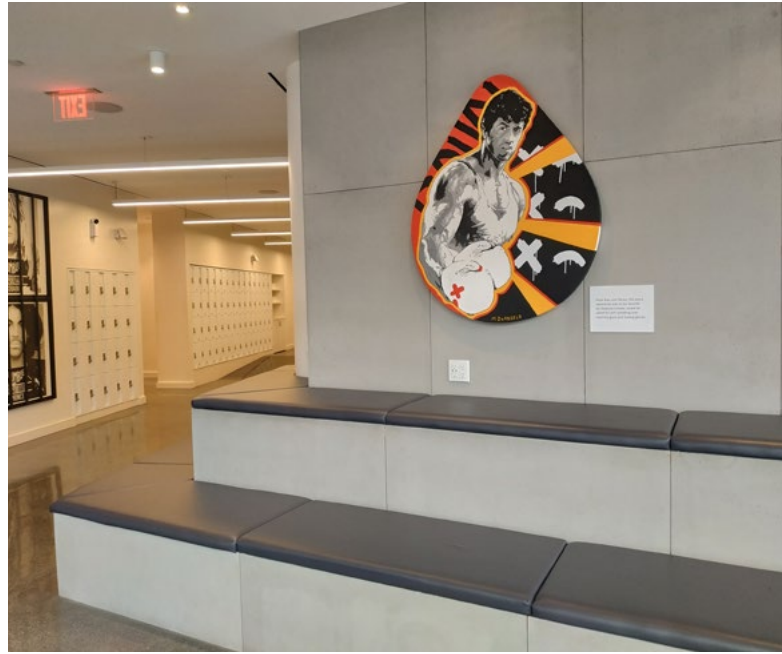
INSTALLATION EXAMPLES PANBETON® (NEXT)

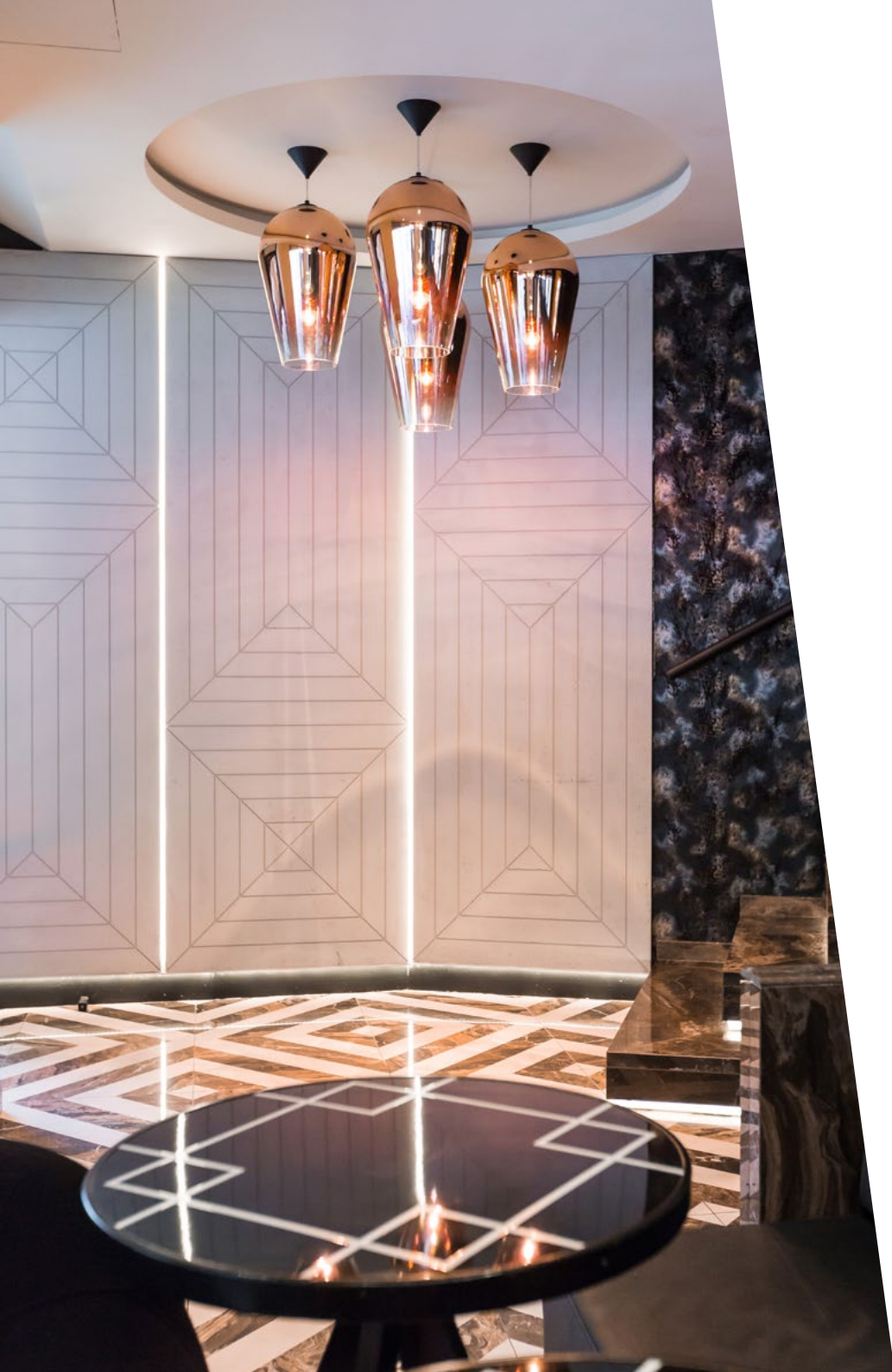


INSTALLATION EXAMPLES SLIMBETON®



INSTALLATION EXAMPLES SLIMBETON® (NEXT)





CONCRETE LCDA

Innovative solutions in concrete for interior design

8 rue Copernic 49240 Avrillé - FRANCE

T. +33 (0) 2 41 33 99 10

F. +33 (0) 9 70 32 65 61

contact@concrete-beton.com

www.concrete-beton.com

