

---

# CONCRETE LCDA

*Innovative solutions in concrete for interior design*

---

*Short presentation of* **SLIMBETON**<sup>®</sup>

# SLIMBETON®

Concrete LCDA is pleased to introduce Slimbeton®: a new generation of lightweight concrete wall cladding. The patent developed by our company in 2015 allows us to offer 7mm thick fibre reinforced concrete cladding. Slimbeton® can also be fitted as decorative panels to dress up furniture, kitchens and any other substrate.

Slimbeton® is available in two ranges: Classic and Scaffolded 2mm in 3 different finishes: light, medium and heavy pitted.

- Competitive price
- Quick installation
- Single dimension



# Steps to choose your **SLIMBETON**<sup>®</sup>

## 1. Choose your pattern

*Classic*



*Scaffolded 2mm*



*1200 x 800 mm*

## 2. Choose your color and texture

### STANDARD COLOUR



200 - Natural grey

### SPECIAL COLOUR



402 - White



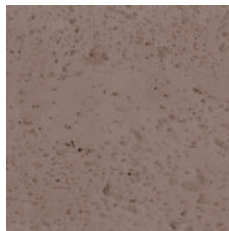
404 - Stone



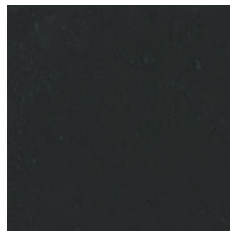
216 - Anthracite Grey



217 - Slate grey

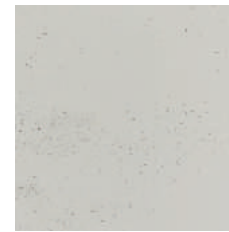


205 - Brown



209 - Black

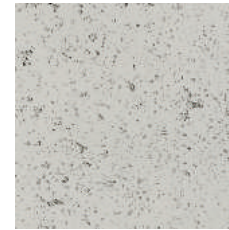
### FINISHES



Light pitted



Medium pitted



Heavy pitted

### 3. Choose your product treatment

	STAIN RESISTANCE	DUST PROTECTION	ASPECT	RECOMMENDED FOR	MAINTENANCE
<b>NATURAL</b>	☆☆☆☆☆		Mat	Walls with low stain risks	No specific maintenance
<b>SEALER E</b> <i>Dust protection</i>	★☆☆☆☆	✓	Mat		
<b>SEALER D</b> <i>Dust + Stain protection</i>	★★★☆☆	✓	Satiny	High traffic areas, Liquid projections risks	Applied twice a year, on high risks areas, with a microfiber cloth/rag
<b>SEALER S</b> <i>Reinforced protection sealer</i>	★★★★☆	✓	Satiny	Kitchen splashbacks, high risks areas	No specific maintenance
<b>SEALER B</b> <i>Vitrified option</i>	★★★★★	✓	Satiny		

APPLIED AT OUR FACTORY BY OUR DEDICATED TEAM

# SLIMBETON<sup>®</sup> *Technical information*

<b>DIMENSIONS</b>	1200 x 800 mm
<b>THICKNESS</b>	7 mm
<b>TOTAL WEIGHT</b>	12 kg
<b>WEIGHT PER SQM</b>	12,5 kg
<b>FIRE CLASSIFICATION</b>	EUROCLASS A1
<b>VOC CLASSIFICATION</b>	A+
<b>EXCLUSION</b>	Outdoor and floor
<b>COMPOSITION</b>	Fiber reinforced concrete (7 mm)
<b>PROTECTIVE SEALER</b>	As an option (aqua based)
<b>FIXING</b>	Gluing – Gluing + Screwing for cellings
<b>SUBSTRATES</b>	Is glued on all substrates
<b>GLUING</b>	Hybrifix 550 DEN BRAVEN
<b>CUTTING</b>	Diamond blade, mitre cut, drilling, cut out by demand...